

Sodus Bay Historical Society



2025 Spring Newsletter

Crescent Beach: A Social History

Part II: Early Actors, Lawsuits, and Ownership

(Continued from the Winter 2025 SBHS Newsletter)

By Rosa Fox

Over the years, I have heard and read many an opinion that “no one” “owns” the Sodus Bay barrier bar. Hopefully, readers will be able to appreciate how this fragile strip of gravel and sand has a history that does connect to formal land ownership from the late 1700s. However, we must remain mindful of the Haudenosaunee’s presence here on Great Sodus Bay long before these colonizing land issues and resolutions.

In the Winter issue, we left off with a 1903 news clipping about Erastus B. Fuller's lawsuit against the Point Charles Association. In the Supreme Court at Lyons on Tuesday, May 19, 1903, Edwin A. Nash presiding, "Fuller claimed title [of the barrier bar] under a deed from the Purdy estate, while Mr. [DeLancy] Stow claimed title from a deed from the Pulteney estate." [Newark Courier, May 21, 1903]

Erastus B. Fuller and Albert C. Wells, former employees of Reverend Fay Hovey Purdy (the previous owner of Lake Bluff Camp Ground), purchased the Lake Bluff property from Purdy in 1879. They opened the grounds for meetings, picnics, and parties that June.¹ Delancy Stow, a trustee of the Point Charles Association, came to Point Charles in 1887, one year after the original twelve Point Charles purchasers established their Point Charles summer colony. Like others, Stow built a "home-like cottage" and is described by

Cory Sheffield in **Charles Point Sketch** (1901)² as a "gentleman of genial companionship." Stow was also a popular and gifted Clyde attorney.

You are surely wondering what the determination of the court was in respect to this suit. First, let's look at some history of the land purchases from 1788 to 1888 through the lens of Sheffield's **Point Charles Sketch**, which includes a listing of property transfers and ownership. (Continued on page 5)

1858 Gillette Wayne County Wall Map. Point Charles, Crescent Beach Barrier Bar, Lake Bluff (Lots 414 & 415)





Sodus Bay Historical Society & Lighthouse Museum

OFFICERS

President	Donna Stern
Vice President	Dave McDowell
Secretary	Bob Legge
Treasurer	Fred Lindenhovius

TRUSTEES

Darleen Contario	Martha Lightfoot
Lisa Marie DeFeo	Holger Stave
Helen Dunlap	Harrison VanDeWalle
Dave Fantuzzo	

EX OFFICIO TRUSTEES

Scott Johnson, Sodus Supervisor

EXECUTIVE DIRECTOR

Elaine Comarella

NEWSLETTER EDITOR

Rosa Fox

LOCAL HISTORIANS

Rosa Fox, Town of Huron
Sandy Hopkins, Town of Sodus
Harold Cheetham, Village
of Sodus Point

7606 North Ontario Street, PO Box 94,
Sodus, New York 14555

email: info@sodusbaylighthouse.org

telephone: (315) 483-4936

www.sodusbaylighthouse.org

Facebook – Sodus Bay Lighthouse
Museum

The SBHS Newsletter is published by the
Sodus Bay Historical Society, a 501(c)3
nonprofit organization. In addition to
grants, SBHS funding comprises donations
and membership dues, which are tax
deductible as allowed by law.



Letter from the President

Spring has arrived, and that means our sleepy little Lighthouse is beginning to come awake again. We are excited to celebrate the 200th year of the first Sodus Bay lighthouse built in 1825. From this structure, our beautiful and historic lighthouse story began. We plan to celebrate the bicentennial of the first lighthouse with wonderful events throughout the summer. Writing this newsletter at the end of March, which is Women's History Month, I was reminded, that, as we celebrate our distant past, we also celebrate our recent past. The story of three women's efforts in 1984 to save our 1871 lighthouse is shared in the article following this letter.

We never did close this winter, as we have past years. Thanks to our committed staff we opened the Lighthouse Museum for Saturdays.

The foot traffic was small, but we did meet new friends each week who came to tour the Lighthouse at a leisurely pace.

I want to share a warm story our staff shared with me. One Saturday in late February, a lovely young visited the Museum. From Philadelphia, they had planned a get-a-way weekend and wanted to go the farthest point where the United States ended, without crossing a border. The couple, both originally from Brazil, had never experienced the beauty of Lake Ontario. They read about the Sodus Bay Lighthouse before arriving in our area and decided to visit, exploring Chimney Bluffs first and then coming to the museum. They spent two hours exploring our displays and artifacts and were enchanted.

It was getting late in the day, and the couple was going to push on to Niagara Falls, but the staff told them how long a drive they had in front of them. The couple was concerned that they had nowhere to stay. The Staff reached out to a local Bed & Breakfast proprietor, who not only agreed to host them, but invited them for dinner that evening.

This is what the community of Sodus Bay Historical Society is all about - meet new people and make new friends.

Enjoy Spring! Please plan on joining us for our great events or just come enjoy the simple beauty of our Lighthouse and the panoramic view.

Donna F. Stern

Donna F. Stern, President of the Board of Trustees

Letter from the Executive Director

Happy spring to all!

We have an action-packed season coming up. Our 2025 season begins with the Spring Opening of the Lighthouse & Museum on May 23. We are happy to announce that the 2025 Summer Concert season will commence on July 6th with the Rochester Metropolitan Jazz Orchestra. On August 20th, we have a special treat. Rhonda Vincent, a Grammy award-winning Bluegrass singer, songwriter, and multi-instrumentalist, will be on the lawn for our Sunday Concert series! The Finger Lakes Orchestra will be here for a Friday night concert on July 11th to kick off our Shipwreck Weekend events. 47 South will be here on July 27th, and everyone's favorite, Chris Wilson, will close the concert season on August 31st.

The 2nd Annual Artisan Faire will take place on August 2nd and 3rd on the grounds of the historic Sodus Bay Lighthouse Museum. Our storytelling series will once again bring history to life. Look for the schedule in this newsletter, and please check out our schedule of events to see what else we have in store for you this season.

And of course, the magical Lighthouse and Museum is the place to be!

See you at the Lighthouse!

Sincerely,

Elaine Comarella

Elaine Comarella

Sodus Bay Lighthouse Museum Executive Director



Sodus Bay Historical Society Mission

TO TELL THE STORY OF SODUS BAY

We do that by:

- *Actively maintaining a museum where we collect, preserve, and exhibit records, writings, historical items, and artifacts;*
- *Preserving and disseminating historic information about the Sodus Bay area;*
- *And maintaining a historic lighthouse.*



Sodus Bay Historical Society Vision

Within 3-5 years, our work will have a strong regional focus, including Sodus Bay and the surrounding communities. Our educational activities will involve presentations, speakers, videos, and both group gatherings and opportunities for individual learning. We will serve both children and adults with both interactive and online education, as well as regularly changing museum displays with helpful docents available. And, in addition to our historic lighthouse, we will feature a multi-use facility with revolving museum exhibits and a place for gatherings three seasons of the year, to support our educational and regional focus.

Saving the Sodus Bay Lighthouse

Donna Stern

For centuries lighthouses have shone as a beacon in darkness, guiding sailors safely on their journeys. Today, many lighthouses remain throughout the world as remnants of the maritime past. Completed in 1825, the first Sodus Bay lighthouse was a forty-foot-high tower and was located on the current lighthouse property - just north of the present lighthouse museum and tower. The 1825 light served the area until 1871, when the present stone lighthouse replaced it, following which, the 1825 light was torn down and used for rip-rap along the lighthouse bluff shore to help prevent erosion.

The 1871 lighthouse served the area until



Painting of the 1825 Stone Lighthouse and Keeper's Residence constructed on the lighthouse bluff 200 years ago. On display at the Sodus Bay Lighthouse Museum.

1901, when its light was deemed unnecessary, as the outer pier lighthouse became the official Sodus Bay navigation light. Though the bluff light was discontinued, the lightkeeper's dwelling remained in use as a residence until the last lighthouse keeper, Edwin Ward, retired in 1952, at which time the United States Coast Guard took over maintaining the lights and used the keeper's dwelling as a station and residence through the 1970s.

Perhaps some Sodus Bay Historical Society members are not aware of how early members of the historical society were able to obtain responsibility for using and maintaining the lighthouse as a maritime museum.

In 1979, the Sodus Bay Historical Society was granted an absolute State of New York charter to collect, preserve, and interpret many aspects of local history. Four members of the Society - four women - Marjorie McCleery, Margie Beale, Elsie Parsons, and Pearl Rook can be thanked for the initial work to obtain the Lighthouse from the United States Coastguard.

With the Coast Guard no longer using the lighthouse at Sodus Point, this seemed to be a perfect location for a maritime museum. The active members of the society, spearheaded by Marjorie McCleery, spent many hours meeting with local and federal agencies and eventually arranged to have the title of the lighthouse deeded to the Town of Sodus, with the stipulation that the building be leased to the Sodus Bay Historical Society. In 1984, a lease was established granting the Sodus Bay Historical Society use of the Lighthouse property for twenty-five years with provision for renewal for another fifty years if the Society operated and maintained a maritime museum on site, specializing in local history.

With the growing interest in lighthouses across the nation, there has been a broad interest in what has been accomplished locally over the last forty-one years relative to the Sodus Bay Lighthouse Museum. We can thank Marjorie, Margie, Elsie, Pearl, and other members of the Sodus Bay Historical Society for their incredible work establishing an essential landmark and tourist destination in Wayne County and preserving this important local history.

The Old and New Pre-Emption Lines³

Pre-Emption is defined as the right of purchase before others.

The Treaty of Hartford in 1786 resolved a dispute between Massachusetts and New York State, conveying to Massachusetts the pre-emptive rights to negotiate with Haudenosaunee nations for purchase of land in western New York, west of a yet to be surveyed Pre-Emption Line. Massachusetts sold their pre-emptive rights to Oliver Phelps and Nathaniel Gorham in July of 1788, who in turn purchased the land from the Haudenosaunee. The Treaty of Hartford specified a pre-emption line was to be run from the 82nd milestone marker at the Pennsylvania-New York state line (near Millerton, PA) to Lake Ontario. *Note: Milestone makers were used to show distances and guide travelers along early transportation and postal routes. They also became handy for surveying. The 82nd milestone marker, on the 42 parallel, is 82 miles west of the Delaware*

In July of 1788, two years after the Treaty of Hartford, the Pre-Emption Line was surveyed from the 82nd mile marker north to Lake Ontario. The area encompassed in this survey included everything in the Phelps and Gorham Purchase from the Genesee River to the Pre-Emption Line.



Oops!! The Pre-Emption Line survey had a significant measuring error. To correct the error, the Pre-Emption Line was re-surveyed in 1792 resulting in a "New" Pre-Emption Line. The area of land between the two lines of some 140 square miles is known as "The Gore." Along the Lake Ontario shoreline, the Gore lies approximately between Maxwell Bay (old line), some three miles west of Sodus Bay, and just east of Charles Point (new Line). There is some dispute as to whether the New Pre-Emption line goes to the shores of Great Sodus Bay or Lake Ontario, but that is discussion for a different article

The New Pre-Emption Line is the municipal boundary between the towns of Sodus and Huron. On Crescent Beach, the boundary line is located east of Charles Point and just west of the current big break. (See sidebar next page on Colonel Hugh Maxwell.)

(Left) Augustus Porter, 1794 Map of Phelps and Gorham Purchase showing Old and New Pre-Emption Lines. Note: Both lines run only to the shores of Maxwell Bay (Old) and Sodus (New) not to Lake Ontario. (Below) Close-up of both lines from above map. Map credit: University of Rochester Rare Books and Special Collections. <https://rbscpehibits.lib.rochester.edu/items/show/4542>.



Maxwell Bay & the Pre-Emption Line

Revolutionary War veteran and experienced surveyor, Colonel Hugh Maxwell played a significant role in the survey of the first Pre-Emption Line. In June 1788, Maxwell conducted a trial survey, followed by a formal survey in July and August of the same year. His work defined the eastern boundary of the Phelps and Gorham Purchase, running from the 82nd milestone on the Pennsylvania border to Lake Ontario - temporarily. Due to a measuring error, this first line veered westward, ending at Maxwell Bay, approximately three miles west of Sodus Bay. Named for General Maxwell, Maxwell Bay is a historical site designation for the Old Pre-Emption Line.

Sheffield's Deed Summary Related to the New Pre-Emption Line

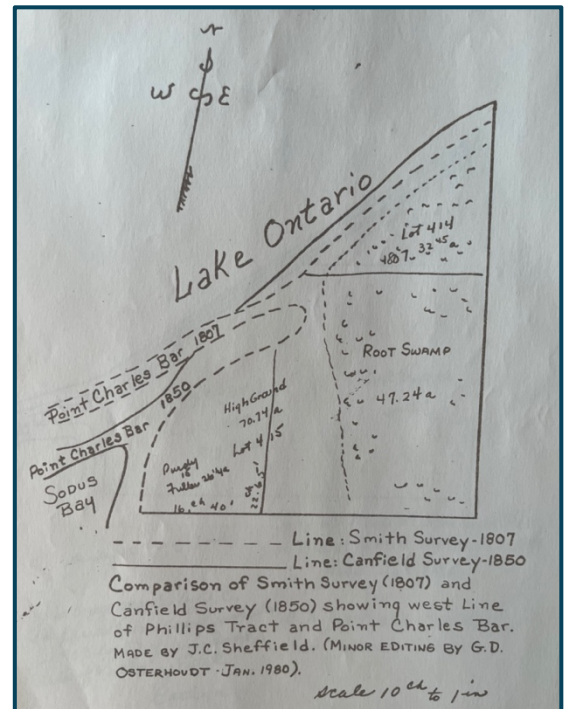
Though it is not apparent in Judge Nash's court transcript that Nash used any of the following information, our understanding of property transfers may help make sense of the ownership history of Crescent Beach. Sheffield's summary included 1.) a portion of Crescent Beach and all of Charles Point west of the Pre-Emption Line and 2.) most of Crescent Beach to the east shore of Sodus Bay – the west line of the Phillips Tract. (see map below)

Land west of the New Pre-Emption Line, including Charles Point: Oliver Phelps and Nathaniel Gorham purchased a tract of land, some 2.6 million acres, from the Haudenosaunee Six Nations in July of 1788. Several transactions between succeeding owners followed that acquisition. Charles Williamson, a land agent for the wealthy Sir William Pulteney, purchased this tract in 1798. Pulteney and his partners were interested in investing in land in this area of New York. A New York State statute of this period restricted non-citizen ownership of land. Born in Scotland, Williamson decided to become a

U. S. citizen, so that he would be able to carry on sales and operations for Pulteney and his associates. The U. S. Alien law of 1798 allowed a three year window for non-citizens to obtain legal U. S. land ownership. This law was set to expire at the end of 1801. On October 31, 1801, Charles Williamson transferred the deed for this parcel, including Point Charles, to Sir. William Pulteney.

Land east of the New Pre-Emption Line had been purchased by George Clinton and the Commissioners of New York State from the Cayuga Nation as noted by a deed in June 1790. With several transfers of the deed after 1790, the property, under the same framing as above with the U. S. Alien law of 1798 non-alien ownership provision allowed a transfer of land east of the Pre-Emption line from Dudley Walsh to Sir William Pulteney on March 4, 1801.

Pulteney died May 30, 1805. Point Charles and Crescent Beach and the rest of the vast purchase, now part of the Pulteney Estate, transferred to his heir, daughter Henrietta Laura Pulteney who died in 1808. The



Hand drawn map of the Phillips Tract, lots 414 and 415, Lake Bluff Campground. The bay shore is the west boundary of Phillips Tract and east boundary of Point Charles Association. Source: Sheffield's Point Charles Sketch (1901).

estate was then overseen by trustees until 1817, at which time the property of Point Charles and Crescent Beach was sold to Andrew McNab and Joseph Fellows, two Scot surveyors and local developers with several Sodus Bay interests - in particular Port Glasgow (Resort). McNab sold his shares to Fellows in 1828. Fellows sold to Georgette Lummis in March of 1866, and Georgette transferred the property to her father Benjamin Lummis in October 1866. On August 5, 1880, Benjamin Lummis sold all that land as mentioned in the following survey description to James Bothwell.

"All that tract or parcel of land situate in the town of Huron, Wayne County, New York, known and distinguished as Point Charles in Sodus Bay, bounded on the east by the west line of the Phillips tract as surveyed in 1807."

In 1888, the last conveyance noted in Sheffield's writing was the twelve partitioned lots on Point Charles from James Bothwell to twelve purchasers for lots 1-12. Those twelve purchasers and their families "set about erecting cottages and such on the high ground. It was in 1888 that the Point Charles cottagers began laying out lots on the sand bar for development." ⁴

Note: Point Charles listed as being in Huron in the above is not a typo. There is even a map from the 1850s denoting Point Charles as being in Huron. More to be explored on this subject. If anyone has any thoughts about that, this author would be pleased to hear from you.

Fuller vs Stow (Point Charles Association) court transcript from the May 1903 trial ⁵

A jury having been waived, Judge Nash heard both sides and studied an April 1903 survey conducted by Lincoln Bishop of the properties, considered the following points:

1. The plaintiff (Fuller), in possession of lots 414 and 415 of the Phillips tract, the west line of which was the "easterly shore of Great Sodus Bay, at low water mark, and designated in a survey made by John C. Bishop."
2. The defendant (Stow, trustee for the Point Charles Association), was in "possession of certain lands situate in the towns of Huron and Sodus . . . known as Point Charles and the Point Charles Bar, the east boundary there of being the west line of said Phillips tract and being an extension of the most easterly shore line of Great Sodus Bay across said bar to Lake Ontario."
3. "The plaintiff's land consists of a hill, with a plateau on the top thereof, on which there are a number of cottages, used as a summer resort, and known as Lake Bluff, the north end thereof being a bluff about one hundred feet high, and bounded along its base" by Lake Ontario.
4. "The Point Charles Bar is a narrow strip of land about one hundred feet in width north and south and extends westerly for a mile or more until it connects with Point Charles and is bounded" on the north by Lake Ontario and on the south by Great Sodus Bay; "the plaintiff's north line and the defendant's north line forming a continuous shoreline along Lake Ontario."
5. Judge Nash went on to comment about the erosion of both the Lake Bluff north shore as well as the Point Charles Bar erosion on the north (Lake Ontario side) and accretion on the south (Sodus Bay side).

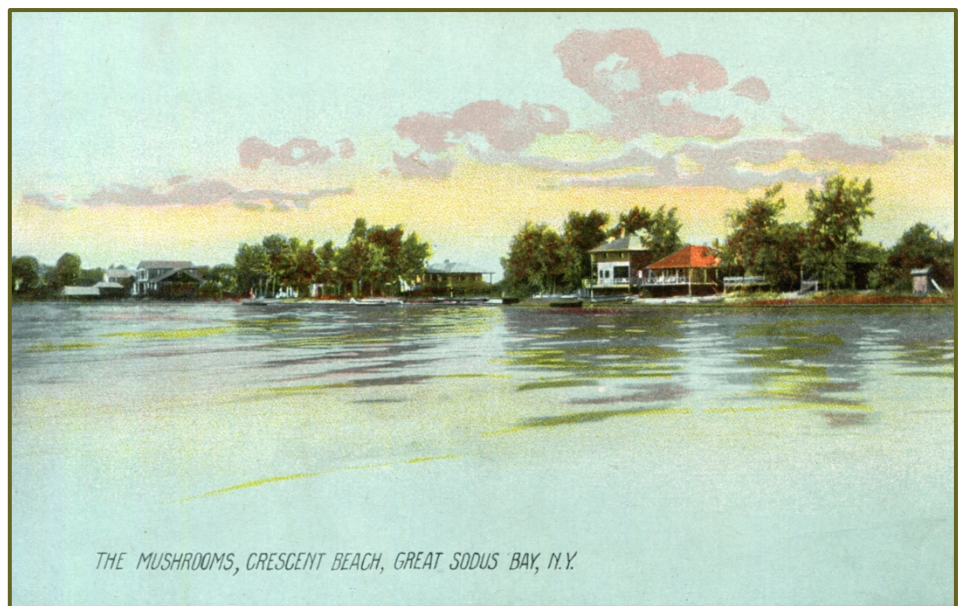
Derived from the above facts and review of the 1903 survey which located the plaintiff's west boundary and the defendant's east boundary, Judge Nash drew the following conclusions:

1. All the accretions formed on the southerly portion of Point Charles Bar, were "made upon the land of the defendant."
2. "The plaintiff has no right, title or interest in or the right of possession in or to any portion of the Point Charles Bar."
3. "The title and right of possession of all lands on Point Charles Bar and west of the aforesaid line [Phillips Tract] is vest in the defendant."

By June 1903, the Newark Courier noted that three cottages would be erected "on the Point Charles sand bar this year, as the bar had been legally awarded to the Point Charles Association."

The following appears two years later in the. Arcadian Weekly Gazette, August 2, 1905: "The Sand Bar is booming. The cottagers got together a few days ago and named the bar Crescent Beach. A fine new steamboat landing has been constructed in front of Wayne Avenue, so that the Beachers will not be obliged to remove their shoes and walk with awe over the sacred planking on the Private Ground of the Charles Pointers. Another good steamer dock has been built in front of the 'Mushroom Cottages.' Crescent Beach is a paradise for children and there are a lot of them there."

The Crescent Beach story Part III: Resilient Generations will continue in the next issue.



Footnotes:

1. **Newark Union**, May 3, 1879 B
2. Sheffield, Cory. **Point Charles Sketch**. 1901.
3. *For the reader who may desire to delve into the Pre-Emption Line saga, John Marks, Curator of Collections and Exhibits at the Geneva History Museum, has written an excellent blog on the subject covering the historical years from the 1781 Military Tract through the 1796 adoption of the second Pre-Emption Line survey.* <https://historicgeneva.org/people/the-pre-emption-line-part-1/>
4. Sheffield, Cory. **Point Charles Sketch**. 1901 p 19.
5. Many thanks to Wayne County Historian, Jane Milem for locating and the Wayne County Clerk's office for making available the 1903 court records of Fuller vs. Point Charles Association. The transcript is available at the Sodus Bay Lighthouse Museum and the Huron History Center.

Additional Reading: Pulteney Estate During the 19th Century from Crooked Lake Review by John Folts:

https://www.crookedlakereview.com/articles/101_135/129fall2003/129folts.html



**Have you ever
Dreamed of a
Romantic
Lighthouse
Wedding?**

**Sitting on the banks of Lake Ontario,
the Sodus Bay Lighthouse & Museum
stands apart as a setting for
spectacular weddings, distinguished by
its breathtaking views of
Lake Ontario and its fabulous
Gardens.**

**Dates are still available for the 2026
and 2027 seasons.**

Call for more details (315)483-4936

2025 SODUS BAY LIGHTHOUSE MUSEUM

5K RACE/WALK

Saturday, July 5, 2025



Check-in: 7:00 AM

Race Start: 8:00 AM

Check in location:

Sodus Bay Lighthouse Museum

7606 North Ontario Street

Sodus Point, NY 14555

Phone: (315)483-4936

TO REGISTRATION :

[https://runsignup.com/Race/NY/SodusPoint/
SodusBayLighthouse5KRun](https://runsignup.com/Race/NY/SodusPoint/SodusBayLighthouse5KRun)

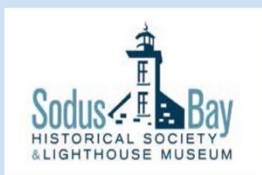


CELEBRATING THE 200th ANNIVERSARY OF THE ORIGINAL LIGHTHOUSE BUILT IN 1825.



**In 1870, the original lighthouse was replaced with
the current lighthouse. The markers are to the right of the current
lighthouse.**

Shipwreck Weekend



July 11th, 12th & 13th, 2025

July 11th-6-7:30 pm-Finger Lakes Orchestra

On the Lighthouse Lawn

July 12th-Speaker and Shipwreck Explorer,

Jim Kennard at Sodus Point Community Center from 1PM-3PM

July 13th-Chip Stevens, Shipwreck Painter at the Lighthouse from 1-3pm

The Neighborhood Association will be hosting children's activities throughout the weekend at the Lighthouse.

Watch for more scheduled activities!

SODUS BAY HISTORICAL SOCIETY PRESENTS OUR SECOND ANNUAL

Artisan Fair August 2nd-3rd 2025

Join us for a juried art show showcasing a variety of artisans and their art for sale, including works in oil, acrylic, wood, glass, and more.

Enjoy wines and ciders from the Finger Lakes and local wineries.

Dine on delicious gourmet food from regional caterers!

The Sodus Point Artisan Festival is part of the Sodus Bay Historical Society, a non-profit organization. Our vision is to create an event and venue dedicated to providing a unique space exclusively for artists and fine crafts.



Rhonda Vincent

Live in Concert!

At the Sodus Bay

Lighthouse & Museum

Sunday, August 10, 2025

2-4pm



Rhonda Lea Vincent is an American bluegrass singer, songwriter, and multi-instrumentalist. Vincent's music career began when she was a child in her family's band The Sally Mountain Show, and it has spanned more than four decades. In media, Vincent has been dubbed the "Queen of Bluegrass" by several sources.

Vincent is an eight-time Grammy nominee, winning the Grammy Award for Best Bluegrass Album in 2017. In 2020, she was inducted as a member of the Grand Ole Opry.

FREE CONCERT

7606 North Ontario Street,
Sodus Point, NY 14505

Bring your own seating for the lawn
Refreshments will be available at the
Lighthouse Concession Area and
Firefly Nectar.



Sodus Bay Lighthouse & Museum's 3rd Annual Golf Tournament Monday, August 11, 2024 at Sodus Bay Heights Golf Club!!



Registration
Information
coming soon.

Sodus Bay Historical Society

2025 Calendar of Events



Revised

February 15th	Lighthouse & Museum Opening on Saturdays from 11am-4pm until May 23rd
May 23rd	Lighthouse & Museum opening for season
May 31st	Lighthouse Wedding
June 3rd	Lighthouse Wedding
June 28th	Lighthouse Wedding
July 5th	Sodus Bay Lighthouse & Museum 5k Run & Walk
July 6th	Sunday Concert Series-Rochester Metropolitan Jazz Orchestra-2pm-4pm
July 8th	Storytelling Series-Fur Trading in Sodus Bay-Tom Sawtelle-Village Hall
July 11th	Friday night concert-Finger Lakes Orchestra-6pm-8pm-Lighthouse lawn
July 12th & 13th	Shipwreck Weekend
July 29nd	Storytelling Series-Her New Murder Mystery-Karen Shughart-Village Hall
July 26th	Lighthouse Wedding
July 27th	Sunday Concert Series-47 South-2pm-4pm
Aug 2nd & 3rd	Sodus Bay Lighthouse & Museum 2nd Annual Artisan Faire
August 9th	Lighthouse Wedding
August 10th	Sunday Concert Series-Rhonda Vincent 2pm-4pm
August 11th	Sodus Bay Lighthouse & Museum Golf Tournament
August 14th	Storytelling Series-One of the First Electric Cars-Steven Heald--Village Hall-6pm-7:30 pm
August 20th	Storytelling Series-The History of Crescent Beach-Rosa Fox-Village Hall-6pm-7:30 pm
August 31st	Sunday Concert Series-Chris Wilson-2pm-4pm
October 25th	Lighthouse & Museum closes for full time season but will remain open on Friday, Saturdays and Sundays until Oct. 26th. From October 26 until Dec. 20th, the Lighthouse & Museum will be open on Saturdays only from 11am-4pm.

Storytelling series is from 6-7:30pm unless otherwise noted

Some dates may be subject to change if needed.

Sodus Bay Historical Society presents the



2025 Free Summer Concert Series At The Lighthouse

Sunday, July 6th *Rochester Metropolitan Jazz Orchestra*

A celebration of the Big Band tradition, playing favorites from all eras

Friday Evening, July 11th *Finger Lakes Orchestra*

This community group of volunteer musicians bring excellent classical and pops music to the Lighthouse lawn from 6-8 pm.

Sunday, July 27th *47 South*

Rochester-based group that plays a variety of styles, from rock to country to blues

Sunday, August 10th *RHONDA VINCENT*

Grammy award winning Bluegrass singer, songwriter and multi-instrumentalist

Sunday, August 31st *Chris Wilson*

Back by popular demand - playing country, pop, folk, and popular music.



Sundays 2:00-4:00 p.m.

♪ 7606 North Ontario Street, Sodus Point, NY ♪

Concerts are FREE

Bring your own seating for the lawn

Refreshments are available at the

Lighthouse Concession Area

THANK YOU!

TO THESE

SODUS BAY LIGHTHOUSE SPONSORS

In addition to our loyal members, the Sodus Bay Historical Society appreciates the generous support from area businesses and foundations. Their ongoing contributions help the Sodus Bay Historical Society and Lighthouse Museum move forward with the summer concert series, student activities, exhibits, and other programming. Please be sure to show your support by visiting these local establishments and let them know how important their support of Sodus Bay history is to you!

*Auburn Public Theatre Re grants Program
with Support of the Office of the Governor and the New York State Legislature
Bay View Bed & Breakfast*

*Robert G. Boehmler Community Foundation • Big Dog Country
Captain Jack's Goodtime Tavern • The Shoppe at Captain Jack's Goodtime Tavern
Davenport - Hatch Foundation • Dunkin Donuts • Dynalec Corporation
Embark Craft Ciderworks • Empire Tree • Fire Research and Technology
Fowler Brothers • Hamilton AV • The Heights Restaurant
Augustus L. and Jennie D. Hoffman Foundation • JT Storage
Scott Johnson • Mark Ketcham & Werner Lutz • Krenzer Marine • Landmaster
Leone Landing • Leone Timing • McDonald's • Marshall Farms Group Ltd.
Morgan Stanley • P.A.T.I. Fire & Safety
Reliant Community Federal Credit Union • Rubino's at the Point
Ryan Phelps Auto Sales • Sodus Bay Heights Golf Course
Town of Sodus • Village of Sodus Point • The Spencer Group
C. H. Stuart Foundation • Ward Steel Company
USA Racing • VanDeWalle Fruit Farm • WACK Radio
Wegmans • The Wetmore Family
Claude G. and Geraldine A. Wright Family Foundation
Youngman Orchards Farm Market
Sodus Bay Historical Society Members*